



Flammability Tester (IS-15061)



ANNEX A
(Horizontal Test)

ANNEX B
(Vertical Test)

Model No. PFT IS-15061

Flammability Tester intends this standard to serve as a preliminary indication of a Automotive Vehicles flammability requirements acceptability for use as part of a device or appliance with respect to its flammability. It is not intended to reflect the hazards of a material under actual fire conditions.

This standard applies to the burning behavior (ignitability and burning rate) Test to determine the horizontal burning rate of the material or the vertical burning rate of the material

The following is a brief description of 2 tests that apply to sample (sheet, Fabric and film) and how the rating system works. This is not meant as a procedure for running the tests nor as a way of determining the acceptability of a material for a particular application.

Annex A: a sample is held horizontally in a U-shape holder and is exposed to the action of a defined a low energy flame for 15 sec. in a combustion chamber

Annex B: The test consists of exposing samples, held in a vertical position, to a flame and determining the speed of propagation of the flame over the material to be tested.





Presto Stantest Pvt. Ltd.

I-42, DLF Industrial Area Phase-1, Delhi Mathura Road, Faridabad 121003, Haryana, India
 P : 9210 903 903, +91 129 4272727, 93111 24302 E : info@prestogroup.com

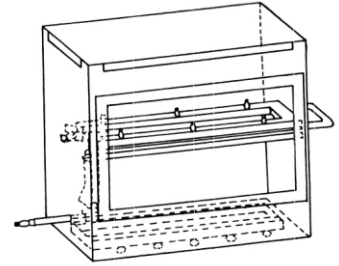
- Faridabad • Sonapat • Kolkata • Mumbai • Pune • Ahmedabad
- Chennai • Bangalore • Hyderabad

www.prestogroup.com

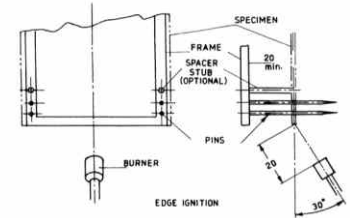


Key Specifications:

Display	Digital 7 Segment
Distance between Burner & Specimen	Annex B : 20 mm and Annex A: 18
Specimen Size	Horizontal Burning Test - 356 x 100 mm Vertical Burning Test - 560 x 150 mm
Time Accuracy	± 1 sec. at full range.
Power	220V, Single phase, 50 Hz
Specimen Holder Angle	90° & 180°
Digital Timer Range	999.9 Second
Digital Timer Least Count	0.1 second
Annex A vent hole	19 mm ± 1



ANNEX A



ANNEX B

Highlights:

Flame Auto Stop	Yes
Material	Stainless Steel
Specimen Holder	1 set
Wire Gauge	Yes
Test type	Horizontal Annex A or Vertical Annex B

* Horizontal/ vertical orientation to be selected during ordering. Single orientation available in one chamber

* LPG Empty Cylinder, Regulator, Pipe & Dust Collector Tray not a part of supply

Optional

Flammability Tester with Various Standard ASTM-D1230, ISO 3795 & FMVSS 302 also available on request

Thank you customers for choosing us as your partners in growth !



*All the above logos are the sole property of their respective owners and are used purely for depiction purposes only.

OUR OTHER PRODUCTS :-

